

HORTEX FOUNDATION

Helping the nation build up a market-oriented
horticulture export base since 1997

REEFER TRUCKS & REEFER CONTAINER FOR RENTAL



HORTICULTURE EXPORT DEVELOPMENT FOUNDATION

Sech Bhaban (3rd Floor, Western-side)
22, Manik Mia Avenue, Sher-e-Bangla Nagar
Dhaka-1207, Bangladesh

Tel: 880-2-8123433, Fax: 880-2-9125181

Email: hortex@citechco.net

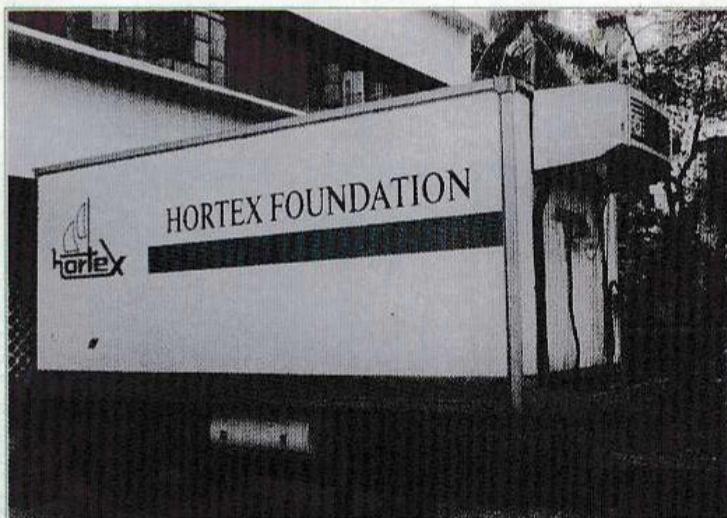
Website: www.hortex.org

Why do you need reefer container and reefer trucks :

- To maintain cool-chain, while transporting your fresh produce/product.
- To ensure proper quality.
- To transport your produce/product in good condition.
- To help maintain increased shelf-life of your fresh produce.
- To store your produce/product in appropriate temperature.
- To comply with EUREPGAP, HACCP and similar other requirements in the export markets.



Outside view of Reefer Truck



Outside view of Reefer Container

FACILITIES OF REEFER TRUCKS :

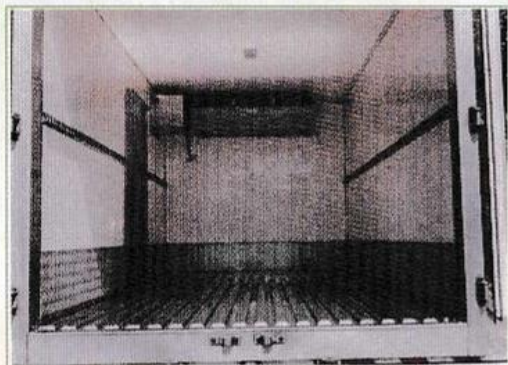
- Capacity: 3,000 kg.
- Temperature control: (+) 150 C - (-) 250 C.
- Auto humidity control for fresh produce: Up to 99%.
- Truck engine driven cooling facility, while running.
- Electricity/diesel operated in standby position.



Inside view of Reefer Trucks

FACILITIES OF REEFER CONTAINER :

- Capacity: 18,000 kg.
- Platform mounted on wheel.
- Temperature control: (+) 150 C - (-) 250 C.
- Auto humidity control of fresh produce: Up to 99%.
- Electricity/diesel operated.
- Suitable for use as a mini cold storage.
- Useable as a transport vehicle also with the help of a mover.



Inside view of Reefer Container

Rental rates :

Reefer truck-	Tk. 5,000 per day
Reefer container-	Tk. 1,000 per day (long term)

- Rentals are subject to 'Conditions of Use'.
- Preference will be given to horticulture produces.

HORTEX REEFER TRUCKS AND CONTAINER ARE COMPETITIVELY PRICED !

**COOL CHAIN MANAGEMENT IS A MUST FOR
QUALITY FRESH PRODUCE EXPORT.**

USE REEFER TRUCKS AND CONTAINERS.

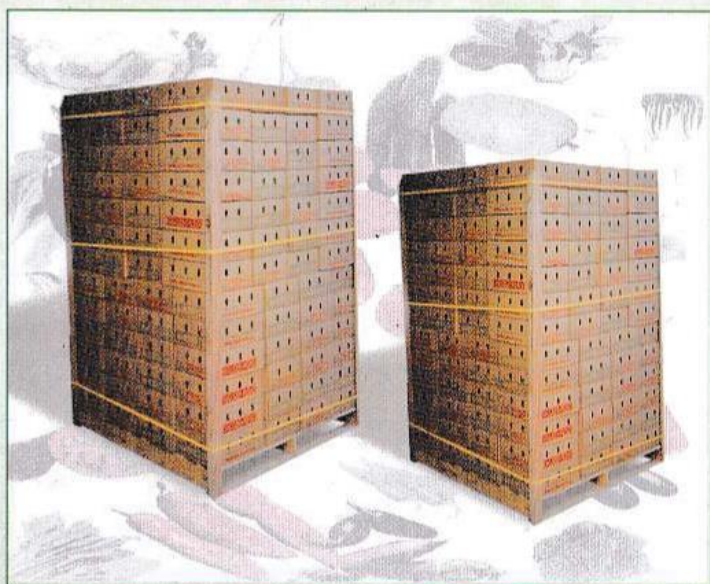
For further details please contact:

Administration Department, Hortex Foundation.

Role of Hortex Foundation

The Horticultural Export Development Foundation (Hortex Foundation) is a non-profit organization which was established by the People's Republic of Bangladesh under the Companies Act for agri-business development, specially the development, promotion and marketing of exportable horticultural produces with particular emphasis on high-value, non-traditional crops to high-price non-conventional markets. In the area of both export diversification and production expansion, Hortex Foundation is playing a catalytic role in providing:

- (i) *technical assistance in respect of production and post-harvest handling including sorting, grading, packaging and transportation;*
- (ii) *cool-chain facility from production centre to the point of shipment;*
- (iii) *packaging cartons of international standard;*
- (iv) *market information and market feed back;*
- (v) *training on the Total Quality Management (TQM);*
- (vi) *monitoring produce quality through the production and marketing chain.*



Cartons on pallet for export